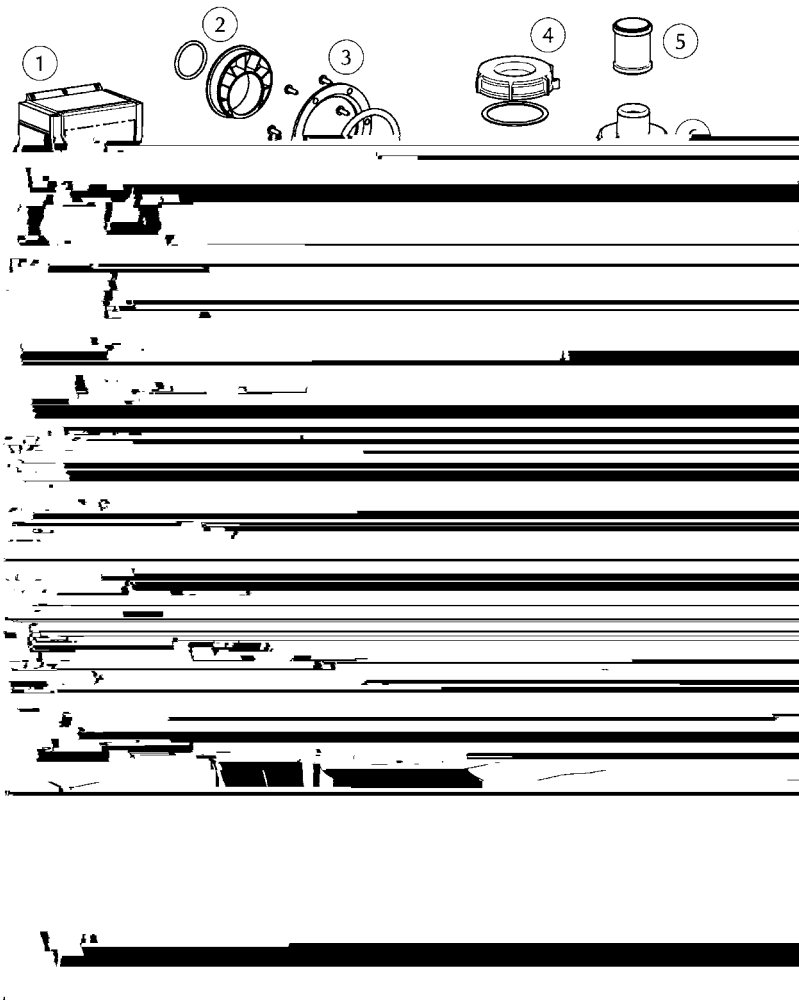


COMPLI 500

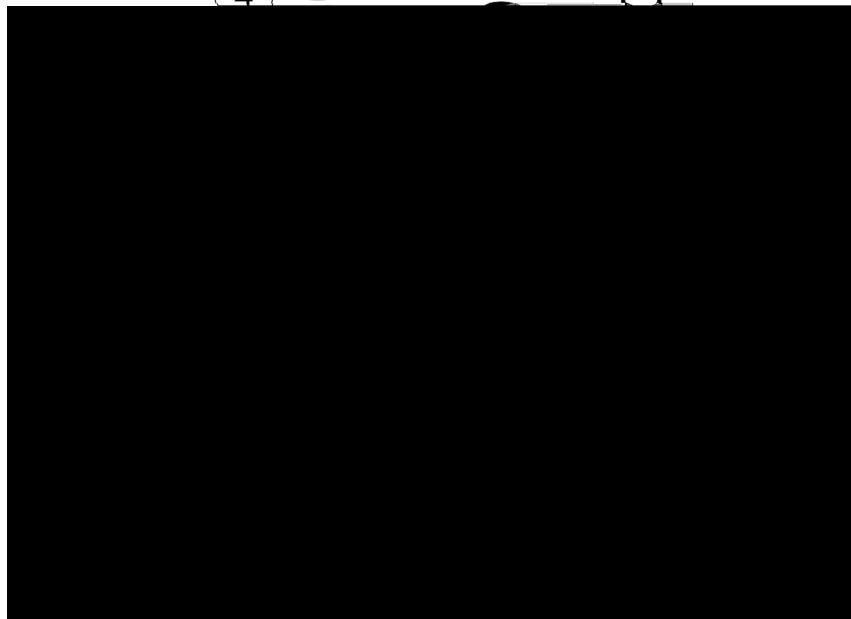
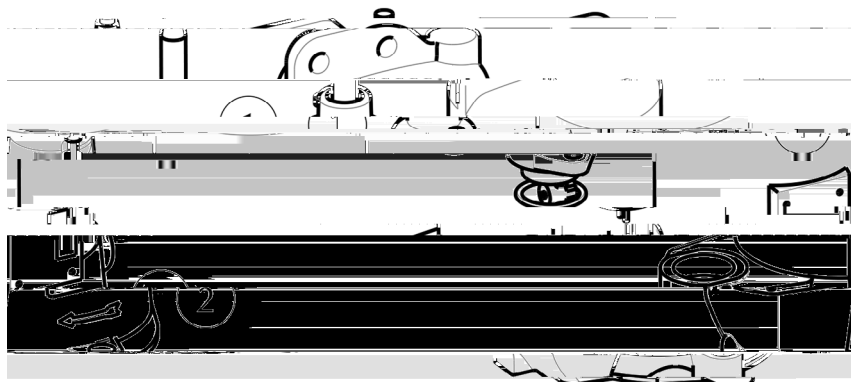
Ersatzteile - Spare parts - Pièces de rechange - Reserveonderdelen - Parti di ricambio - Reservedele - Reserv



①	Steuerung	Control unit	
	510/4, 515/4		JP45788
	525/2, 525/4		JP45789
	535/2		JP45790
②	DN150 / DN100	DN 150 / DN100	JP48871
③			JP43713
④			JP42798
⑤			JP47287
⑥			JP44860
⑦			
	510/4, 515/4		JP46839
	525/2, 525/4		JP47717
	535/2		JP47303
⑧			JP43712
⑨			JP43710
⑩			JP43709
⑪			
	510/4		JP45778
	515/4		JP45779
	525/4		JP45780
	525/2		JP45781
	535/2		JP45782
⑫			JP43705
⑬			JP43711
⑭			JP43706
⑮			JP47966
⑯			JP43707



①	Steuerung	Control unit	
	1010/4 BWE		JP47285
	1010/4, 1015/4		JP47286
	1025/4, 1025/2		JP45786
	1035/2		JP45787
②	DN 150 / DN 100	DN150 / DN 100	JP48871
③			JP43713
④			JP42798
⑤			JP47287
⑥			JP44861
⑦			JP47304
⑧			
	4 m Leitung		JP43712
	15 m Leitung		JP48227
⑨			JP43710
⑩			JP43709
⑪			
	1010/4 BWE, 4 m		JP46754
	1010/4 BWE, 15 m		JP48684
	1010/4		JP45778
	1015/4		JP45779
	1025/4		JP45780
	1025/2		JP45781
	1035/2		JP45782
⑫			JP45785
⑬			



①	Leitung	Cable	
	10/4, 15/4, 25/4		JP43717
	1010/4 BWE, 4 m		JP43721
	1010/4 BWE, 15 m		JP48685
②	Stator + Gehäuse	Stator + Housing	
	10/4, 15/4, 25/4		JP47042
	1010/4 BWE		JP43722
③	Rotorwelle	Rotor shaft	
	10/4, 15/4, 25/4		JP45791
	1010/4 BWE		JP46801
④	Motorabdichtung	Motor seals	JP46806
⑤	Lauf radbefestigung	Impeller fixation	
	10/4, 15/4, 25/4		JP46802
	1010/4 BWE		JP46803
⑥	Lagersatz	Bearing set	JP46724
⑦	Lagerschild	Bearing housing	JP43720
⑧	Dichtungssatz	Seal set	JP46807
⑨	Lauf rad	Impeller	
	1010/4 BWE		JP47290
	10/4		JP45793
	15/4		JP45794
	25/4		JP45795
⑩	Schraubensatz	Screw set	JP47291

